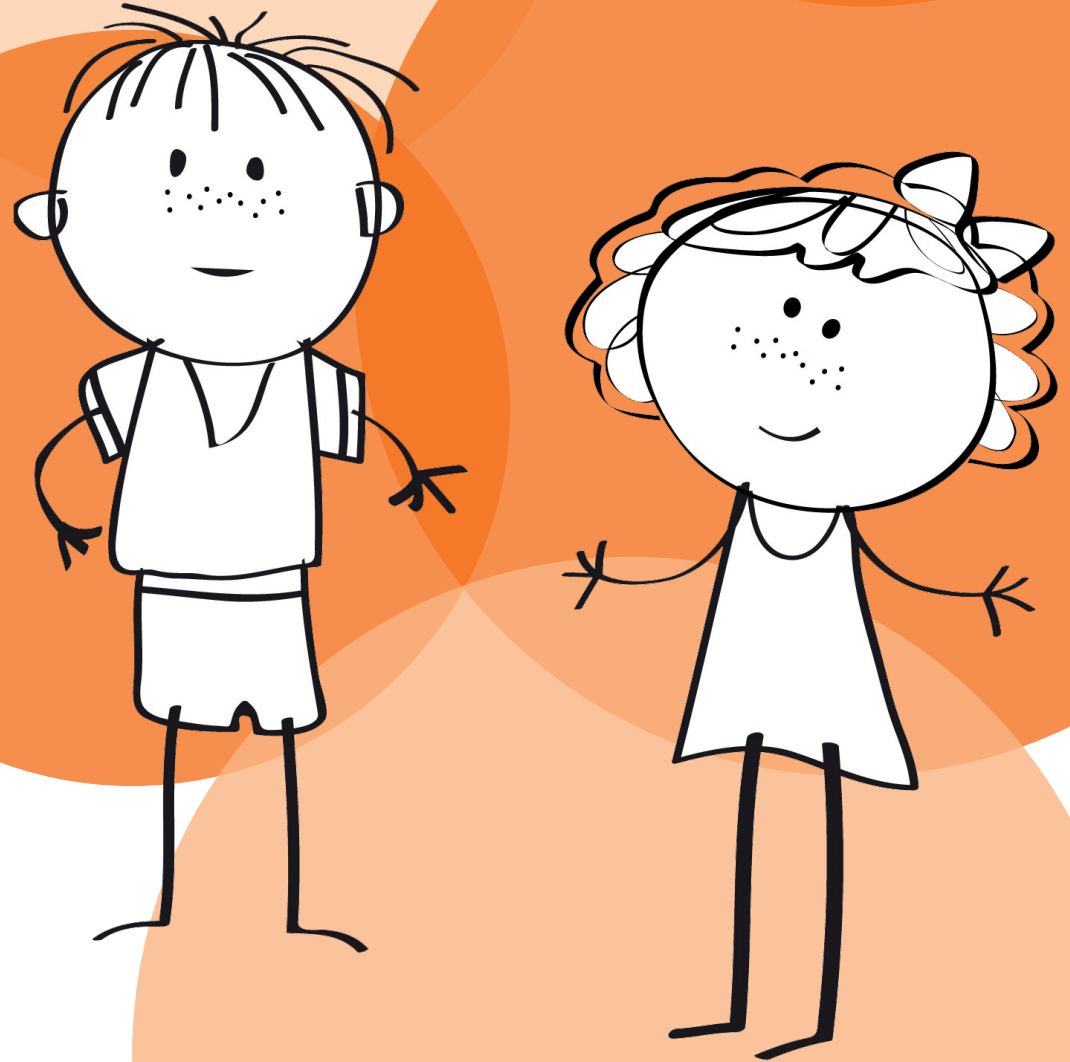




National Children's  
Bureau

# Safeguarding Early Adopters

Overview of multi-agency  
safeguarding learning themes



Department  
for Education



Department  
of Health &  
Social Care



Home Office

# Introduction

## Background to the multi-agency safeguarding reforms

Following the Wood Review (2017) into the role and functions of Local Safeguarding Children Boards (LSCBs), the Government has introduced legislation through the Children and Social Work Act 2017 to reshape the way in which local agencies work together to safeguard and promote the welfare of children. This sees LSCBs ceasing to be the mechanism for multi-agency safeguarding, and instead sets out 'safeguarding partner' arrangements, which will comprise three key agencies (local authorities, health and police). In addition, the Act established a new national Child Safeguarding Practice Review Panel and sets out the transfer of responsibility for child death reviews from LSCBs to new Child Death Review Partners.

## Safeguarding Early Adopters programme

The Department of Education (DfE), together with the Department of Health & Social Care (DHSC) and the Home Office has funded 17 Early Adopters to develop, test and implement new arrangements for multi-agency safeguarding. The range of themes and approaches Early Adopters are developing and testing are set out in this document.

## Role of NCB as programme facilitator

The National Children's Bureau (NCB) is facilitating the Safeguarding Early Adopters programme on behalf of the

DfE with DHSC and the Home Office. NCB will work with the 17 Early Adopter (EA) sites as they put in place new arrangements for multi-agency safeguarding. Through shared learning and peer support, NCB will facilitate the development of a 'community of practice' where Early Adopters are supported to share effective and sustainable solutions and ultimately support the national implementation of effective multi-agency safeguarding arrangements.

## Contents

North West	3
North East	6
Yorkshire & Humber	7
East of England	10
West Midlands	12
London	16
South East	18
South West	19

# North West

## Tameside

### Multi-agency learning theme(s)

- Independent scrutiny
- Voice of the child
- Engagement with schools

### Overview of approaches

#### Independent scrutiny

- Independent scrutiny will be provided through the development of Greater Manchester Standards Board which will fulfil function for 10 sets of safeguarding arrangements in the sub-region.
- The Board will deliver a programme of on-the-ground peer reviews.

#### Voice of the child

- The Board will include a Children's Advocate to ensure voice of the child is an integral part of the process.
- Aspiration to make children the fourth safeguarding partner with support of education providers and the voluntary and community sector working via a 'team around the school' within a neighbourhood structure.
- Developing a Youth Participation Network to connect various youth forums together and engage schools in new safeguarding arrangements in a more meaningful way.

#### Engagement with schools

- Developing an Integrated Neighbourhood Model to strengthen joint working between partner agencies. There is an aspiration to engage every school.
- Neighbourhood Safeguarding Partnership meetings will engage schools 3 times per year and support the team around the school approach.

# North West

## Trafford

### Multi-agency learning theme(s)

- Independent scrutiny
- Contextualised safeguarding (domestic abuse)

### Overview of approaches

#### Independent scrutiny

- Exploring the development, implementation and effectiveness of a strategic approach to safeguarding partnership arrangements which strengthens practice and provides assurance of a combined children and adult safeguarding agenda.
- Developing a robust model that provides assurance across the separate children and adult safeguarding areas, and aligns common areas of concern, which are shared across the partnership, to assure better joined up approached and whole family responses.
- Research and evaluation being supported by Barnardo's.

#### Reducing domestic abuse

- Reduce the impact of domestic abuse on the population of Trafford by developing and implementing an all age sustainable system-wide approach to prevention, early intervention, response and support.
- Appointing a Domestic Abuse Coordinator in collaboration with Community Safety Partnership and Public Health.

# North West

## Salford

### Multi-agency learning theme(s)

- Local reviews

### Overview of approaches

#### Improving local reviews

- Planning for effective local child safeguarding practice reviews.
- Implementing an effective Quality Assurance and Learning and Improvement Framework for cases under the threshold of local practice reviews, but where multi-agency learning is evident.
- Engaging with other local partnership boards (Salford Safeguarding Adults Board, Community Safety Partnership and the Emotional Health and Wellbeing Board) and the new national Child Safeguarding Practice Review Panel to share and embed learning.
- Implementing an evidence-based framework for understanding the impact of learning upon outcomes for children, young people and families.
- Improve the new partnership communications and community engagement in respect of case learning. Develop understanding of the role of the community in regards to supporting children and young people's outcomes in the city.
- Informing and influencing the development and impact of Greater Manchester's soon to be established Safeguarding Standards Board.

# North East

Northumberland  
Gateshead  
Newcastle upon Tyne  
North Tyneside  
South Tyneside  
Sunderland

## Multi-agency learning theme(s)

- Alternative structural model

## Overview of approaches

### Alternative structural model

- To explore the effectiveness of the newly established Northumbria Strategic Safeguarding Forum (SSF) through collaborative and multi-agency working across 6 local authorities.
- Developing and implementing local multi-agency safeguarding arrangements, which are aligned and integrated across the region, particularly in relation to domestic abuse, child sexual exploitation, trafficking and missing children.

# Yorkshire and Humber

## Calderdale

### Multi-agency learning theme(s)

- Voice of the child
- Engagement with school
- Addressing local practice challenges

### Overview of approaches

#### Voice of the child and community engagement

- Developing a community focussed plan where safeguarding arrangements for children and young people are built, sustained, tested and continuously improved.
- Ensuring the essential relationships with schools and other universal services continue to strengthen and safeguarding is recognised as not just being about child protection intervention by statutory agencies, but has a place in the wider community.

#### Addressing local practice challenges

- Addressing how topics such as domestic abuse and sexual exploitation can be more effectively seen across six LAs.

# Yorkshire and Humber

## North Lincolnshire

### Multi-agency learning theme(s)

- Transitional arrangements
- Independent scrutiny
- Engagement with schools
- Contextual Safeguarding (child exploitation and working with adolescents)

### Overview of approaches

#### Transitional arrangements & independent scrutiny

- Establishing new multi-agency safeguarding arrangements (MASA) partnership board which will hold three themed meetings/events per year, including an initial event on Independent Scrutiny.
- Implementation of a multi-agency 'line of sight' case audit and evaluation process.

#### Engagement with schools

- Strengthening existing relationships and activity with schools and colleges to support ongoing engagement, supported by new MASA partnership.
- Establishing framework for schools to undertake safeguarding audits and providing input and support around contextual safeguarding.

#### Work with adolescents

- Utilise local partnership methodology to reshape approach to working with adolescents who face risk, in particular of child exploitation (sexual, criminal, gangs, etc.)



# Yorkshire and Humber

## York

### Multi-agency learning theme(s)

- Engagement with schools
- Voice of the child

### Overview of approaches

#### Engagement with schools

- Further enhance the engagement and confidence of all schools within new safeguarding partnership arrangements to provide early identification of needs and support.
- Establishing Safeguarding Children Partnership, ensuring engagement from schools and key education stakeholders in recommendations and decision-making processes, supported by York Schools and Academies Board.

#### Voice of the child

- Utilising the Voice Strategy, the engagement and views of children and young people will be monitored and evaluated by the Voice and Involvement Group.
- Projects will be established to involve children and young people in giving feedback on their safeguarding concerns.

# East of England

## Hertfordshire

### Multi-agency learning theme(s)

- Engagement with schools
- Independent scrutiny

### Overview of approaches

#### Engagement with schools

- Build on established relationships with schools and work with them to ensure ongoing joint working including running twilight sessions for designated senior leads on key issues.
- Explore how schools can contribute to ensuring the voices of children and young people contribute to safeguarding developments and priorities.

#### Independent scrutiny

- Develop arrangements with regular challenge and liaison with the key partners both separately and collectively.
- Develop clear description of the role of the scrutineer.
- To consider how scrutiny within the key partner agencies can link productively with the scrutiny of the Safeguarding Partnership with the goal of providing ongoing independent challenge and leadership.
- To look at how voice of the child, parent and carers can be built into scrutiny of the safeguarding work and partnership arrangements.

# East of England

## Hertfordshire - continued

Six work streams across the project

1. How to transform from current arrangements to proposed arrangements
2. Local multi-agency safeguarding forum – moving to learning hubs
3. Reviewing budget and split across partners
4. Developing scrutiny role, evaluation and challenge (bringing in external scrutiny and expertise)
5. Local challenge around knife and gangs
6. Building relationships with schools around training provision and specialist training about contextual safeguarding etc.

# West Midlands

## Dudley, Sandwell, Walsall, Wolverhampton

### Multi-agency learning theme(s)

- Regionalisation

### Overview of approaches

#### Local reviews

- Developing and implementing a Black Country Child Death Review Panel to undertake robust thematic analyses of larger numbers of cases which will provide good quality data on causes of death and modifiable factors in domains related to the child and the wider system.

#### Approaches

- Establishing the child death review panel through consultation with stakeholders and engagement with practitioners.
- Developing and agreeing protocols and processes for the creation and sharing of data, reviews and findings.
- Evaluating the effectiveness and findings of the panel, and potential future improvements.

# West Midlands

## Birmingham

### Multi-agency learning theme(s)

- Local reviews
- Working with the national panel

### Overview of approaches

#### Local reviews

- The development of a Regional Framework for the West Midlands region, to commission and disseminate learning from Local Child Safeguarding Practice Reviews.
- Examining the feasibility of adopting a peer review approach with a regionally accredited review team.

#### Working with the national panel

- Consultation with the National Child Safeguarding Practice Review Panel in developing and evaluating regional framework.

# West Midlands

## Stoke on Trent, Staffordshire

### Multi-agency learning theme(s)

- Regionalisation
- Engagement with schools
- Integration of other safeguarding panels

### Overview of approaches

#### Regionalisation and integration

- Developing one multi-agency safeguarding arrangement across the area which aligns governance structures.
- The new structure will be piloted and evaluated with engagement from stakeholders, before being implemented fully.

#### Engagement with schools

- Reshaping engagement of education providers and strengthening relationships to ensure better partnership working.

#### Integration of other safeguarding panels

- Exploring with Office of the Police and Crime Commissioner ways to better align revised safeguarding arrangements with the Community Safety Partnership, in particular to avoid duplication across overlapping areas such as domestic abuse.

# West Midlands

## Solihull

### Multi-agency learning theme(s)

- Alternative structural model
- Engagement with schools

### Overview of approaches

#### Alternative structural model

- Developing new multi-agency arrangements to align processes, streamline resources and improve independent scrutiny.
- The new model will employ an updated meeting structure which focuses on two streams – 'assurance/review' and 'response'.
- The model is based on a 'cycle of continuous development', in which there is strong emphasis on identifying opportunities to improve the efficiency and effectiveness of safeguarding arrangements.
- Embedding ongoing independent challenge and scrutiny within arrangements.

#### Engagement with schools

- Engagement with schools to ensure continued involvement with new arrangements and keeping schools at the centre of local safeguarding within the new structure.

# London

## Bexley, Greenwich, Lewisham

### Multi-agency learning theme(s)

- Independent scrutiny
- Local reviews
- Child death reviews
- Geographical areas
- Addressing local practice challenges

### Overview of approaches

#### Independent scrutiny

- Completing implementation of local learning hub and to test scrutiny arrangements across the three boroughs, supported by an academic partner.
- Establishing a children and young people's partnership board to enable children and young people to influence local safeguarding arrangements.

#### Local reviews

- Establishing shared mechanisms and processes for initiating local serious case reviews, with shared tri-borough multi-agency serious incident and learning subgroup.

#### Child death reviews

- Establishing a tri-borough arrangement for reviews of child deaths through scaling up Child Death Overview footprint and learning.

#### Geographical areas

- Establishing an annual programme of safeguarding partnership improvement and delivery priorities that are shared across new police borough command area and three neighbouring boroughs.

#### Addressing local practice challenges

- Completing implementation of Bexley local learning hub to evaluate the other LAs learning models and consider roll out of a hub model.



# London

## North West London Partnership

- Brent
- Ealing
- Hammersmith and Fulham
- Harrow
- Hillingdon
- Hounslow
- Kensington and Chelsea
- Westminster

### Multi-agency learning theme(s)

- Regional alignment of child death review panels

### Overview of approaches

#### Regional alignment of child death review panels

- Developing regional arrangements for child death review panels to replace the current seven panels, to develop one consistent high quality service that will meet the needs of bereaved families, support front line staff and enhance the single child death review panel process.
- Developing a key worker service and a medical practitioner led rapid response process.

# South East

## Reading, West Berkshire, Wokingham

### Multi-agency learning theme(s)

- Alternative structural model / merging geographical boundaries

### Overview of approaches

#### Alternative structural model

- Developing a new merged Safeguarding Partnership across the three local authority areas for a transitional year, to improve governance, accountability, scrutiny and engagement.
- Establishing Strategic Statutory Partners 'task and finish' group to oversee the merger of three Local Safeguarding Children Boards.
- Engaging with schools, education providers and the early years sector as part of the merged safeguarding partnership.
- Exploring how Independent scrutiny will be implemented across the merged partners, in particular where one local authority is currently inadequate.

# South West

## Devon, Plymouth, Torbay

### Multi-agency learning theme(s)

- Multi-agency outcomes framework
- Local reviews

### Overview of approaches

Multi-agency outcomes framework and models of learning and practice improvement

- Developing and piloting new practitioner led local multi-agency models of learning to drive practice improvement, with involvement from service users.
- Strong focus on practitioner-led evaluation informed and driven by research and 'what works'.
- Commissioning the development of supporting tools and a practitioner-led live audit process.

#### Local reviews

- Establish appreciative enquiry model to conduct local learning reviews.

# South West

## Wiltshire

### Multi-agency learning theme(s)

- New partnership model / consolidating boards
- Independent scrutiny

### Overview of approaches

#### New partnership model

- Developing and evaluating a new partnership model, including a public protection partnership board and family led multi-agency auditing and review of local learning reviews, the Wiltshire Public Protection Partnership.
- Improving multi-agency approach to local challenges of child exploitation, domestic abuse and parental substance misuse.
- Creating a Performance and Outcomes framework.

#### Independent scrutiny

- Developing and implementing a service user informed and co-produced approach to independent scrutiny.

Email us: [info@ncb.org.uk](mailto:info@ncb.org.uk)

LONDON: WeWork London Fields, 115 Mare Street, E8 4RU

BELFAST: The NICVA Building, 61 Duncairn Gardens, BT15 2GB

National Children's Bureau is a charity registered in England & Wales number 258825  
and company limited by guarantee number 952717.



**National Children's  
Bureau**



Department  
for Education



Department  
of Health &  
Social Care



Home Office