

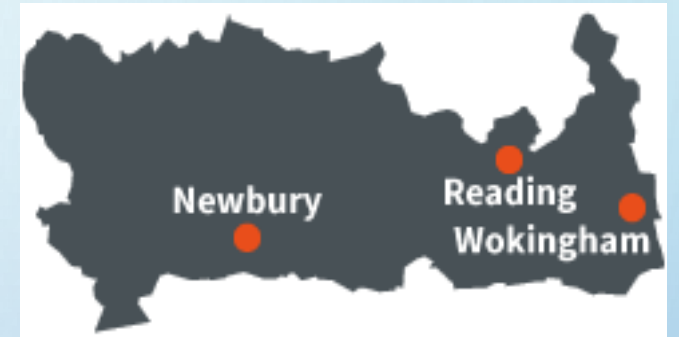


BERKSHIRE WEST SAFEGUARDING CHILDREN ARRANGEMENTS

Andrea King, Project Manager

@Andrea14King

BERKSHIRE WEST'S CONTEXT



- 3 Local Authorities – Reading, Wokingham and West Berkshire
- 1 coterminous CCG
- 1 principle Acute Trust, 2 further Acute Trusts serving some children and families
- Thames Valley Police, NPS and TV-CRC - 9 Local Authority areas i.e. spanning Thames Valley
- Different level of children's services sufficiency, different demographics, different levels of need and risk

BUILDING A COHERENT SYSTEM



- Principles of effective partnership working are key
- Over 100 stakeholders in the previous LSCB arrangements – no one wanted to step away
- Mixed professional views on the effectiveness and efficiency of a shared Safeguarding Arrangement
- Concerns about loss of focus on local children and young people – fulfilling statutory responsibilities and improving practice in this context
- Galvanising different sectors perspectives and skills is key

THE CHALLENGES & OPPORTUNITIES



Leadership changes – 3 DCS roles – 4 DCSs to engage with in a 9 month period; new Lead Members for Children’s Services in some areas



Children’s Services instability and improvement arrangements in some areas, good or excellent practice in other areas – a microcosm for our children’s services landscape nationally



Systems leadership was highly reliant on superb CCG strategic leadership



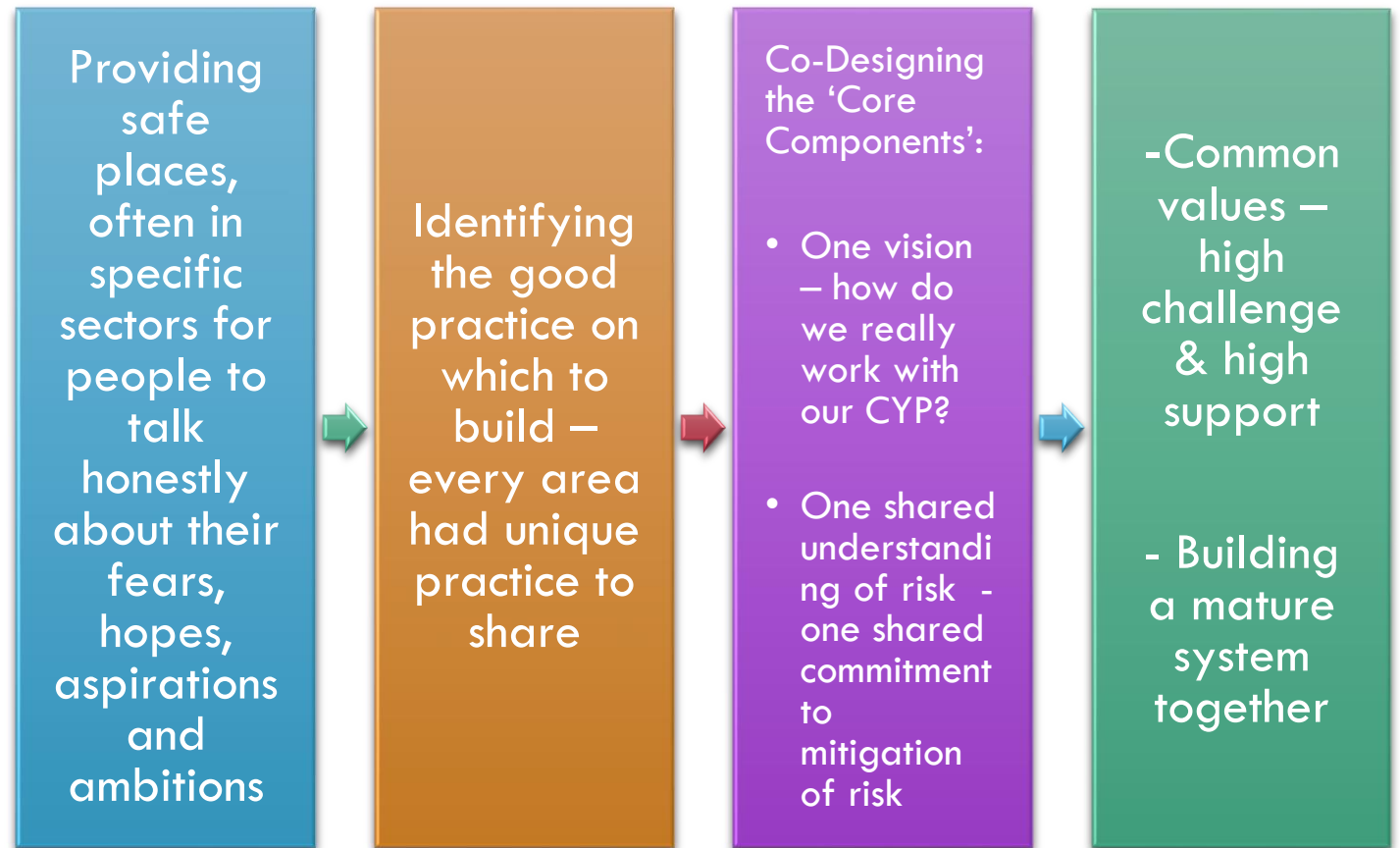
TV Police consistency, clarity and challenge



A focus on our children and young people

BUILDING A LEARNING SYSTEM

“Berkshire West leaders recognise that the crucial work of the partnership often rests on how senior leaders work together to support and challenge each other, to identify risk and mitigate it together, and to problem solve systems issues.”





AFTER TIME.... A SHARED COMMITMENT EVOLVED...



“In order to promote the welfare of, and safeguard, Berkshire’s West’s children and young people effectively, we will:

- Listen with care to our children and young people, and to each other
- Hold each other to account through respectful support and challenge
- Collaborate and co-operate with each other to improve outcomes for children
- Spot problems and difficulties early, problem solving together, recognising we have shared responsibility for our children
- Identify risks in our system and mitigate them together
- Be efficient and timely in our responses to each other and to needs arising from our local communities
- Recognise that each locality area (Reading, Wokingham and West Berkshire) are different. Independent Scrutiny needs to operate differently in each area, but also recognise that we have much to learn from each other and ultimately are stronger together.”

EXEMPLARY LEADERSHIP FROM BERKSHIRE WEST CCG

- MASA Board (Statutory Partners) chaired by CCG Head of Safeguarding Children
- Galvanising systems leaders and embracing new leaders as turnover arose
- A Health Safeguarding Committee – focussing just on the health economy
- Liz Stead, Head of Safeguarding Children, comments:

‘Optimism is a good thing and is often the only thing that maintains focus; the basic belief that one will reach the desired goal....

My role as Chair of our MASA Board was to provide that optimism, listen with care to the spoken and unspoken concerns, fears, apprehension; to draw in those who were reticent to enter the dialogue or reticent to commit, negotiating different professionals views and interests with mutual respect.

It required unequivocal focus on our shared investment in improving outcomes for children.’





SUSTAINING EDUCATION SECTOR LEADERSHIP

- Berkshire West has continued to value the core role of education leadership
- Co-designed Education Safeguarding Groups – one for each locality
 - Ensuring S175/S11 self-assessment is meaningful and leads to sector-led improvement/development plans
 - Introducing a school-led safeguarding Peer Review model
 - Strengthening support for Governor – the ‘support and challenge’ function
 - New safeguarding self-assessment approach in Early Years
 - An annual safeguarding event just for education (all stages, phases and sectors)
- Strengthening education involvement and leadership in Independent Scrutiny Groups – examples of Headteachers leading audit design and CYP participation and co-production
- Exceptional Headteacher leadership - Wokingham



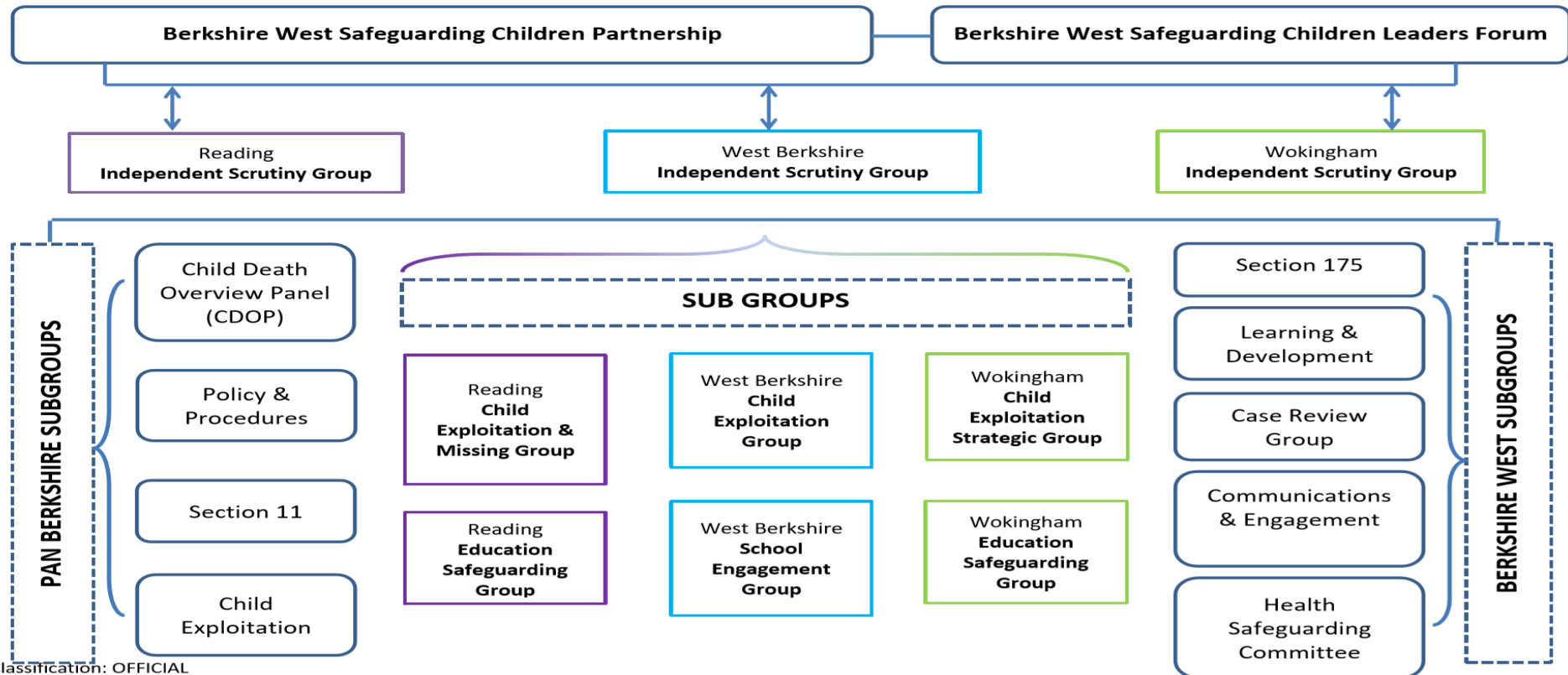
SUSTAINING ENGAGEMENT

- If we mean what we say, then Safeguarding **remains** everyone's responsibility
- Berkshire West Partnership – core statutory partners, Independent Scrutineer (strategic) & Lead Member (CS) opportunity for high challenge and high support
- Berkshire West Forum – All 100 partners invited
- Independent Scrutiny & Exploitation – adapted differently for each locality in response to strengths & needs/risks
- Pan-West – L&D, Case Review, Communications, Health Safeguarding Committee
- Pan-Berkshire – CDOP, Section 11, Policies & Procedures, overview of Child Exploitation
- 12 month bedding and review period (learning and adapting together)

SUSTAINING BERKSHIRE WIDE CO-OPERATION OUR STRUCTURE

Classification: OFFICIAL

DRAFT Berkshire West Multi-Agency Safeguarding Arrangement Structure



INDEPENDENT SCRUTINY

- Independent scrutiny is the foundation of our arrangements.
- Strategic function and an operational function
- Effective Independent Scrutiny relies upon:
 - Effective analysis of performance information
 - Multi-professional audit or reflective learning discussions
 - Understanding the lived experience of local children and young people
 - Understanding the frontline experience, strengths and challenges of frontline staff and volunteers.



A CULTURE OF LEARNING - THE THEMES THAT UNITE US

Thematic review of:

- Domestic Abuse
- Children in Need
- Effectiveness of Early help
- Missing and exploited children and RHIs
- Contextual safeguarding for universal settings, with a specific focus on schools
- Adolescents requiring safeguarding interventions, particularly those where contextual safeguarding risks have been identified
- Transition to adulthood, which we propose could be a joint area of thematic focus with the Safeguarding Adult Board (Berkshire West)
- Care Leavers support and impact on outcomes

Training over 500 children in co-production, using a restorative methodology

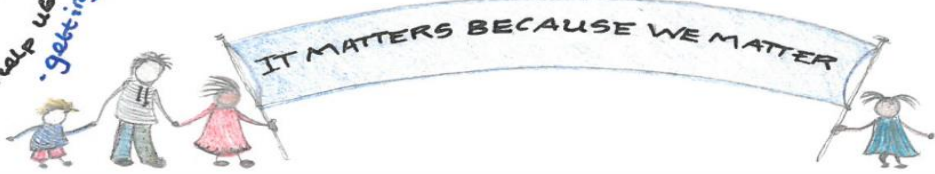
NHS

WHO WHAT WHY

Always remember it's about our voice and our experiences



Your actions matter because they affect our lives



Thank you for
listening

Any
questions?

